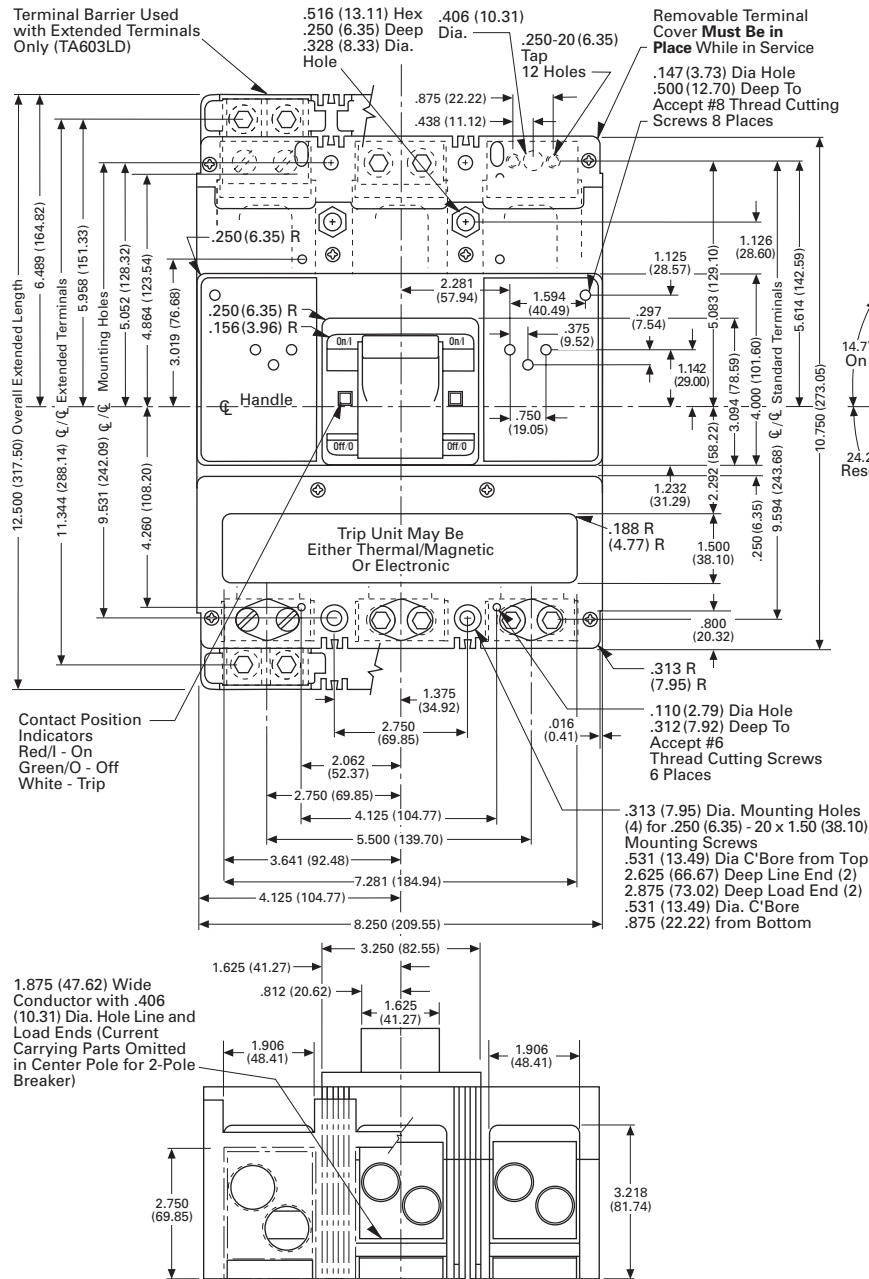


October 1997
Mailed to: E, D, C/29-100A

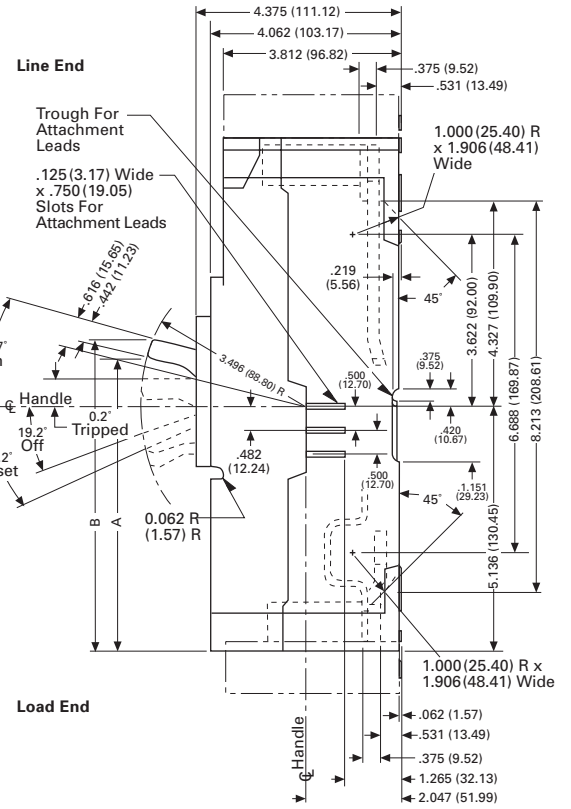
Series C[®] HMCP Motor Circuit Protectors 3-600 Amperes

L-Frame

Front View



Side View



Handle Forces (From End of Handle) ①

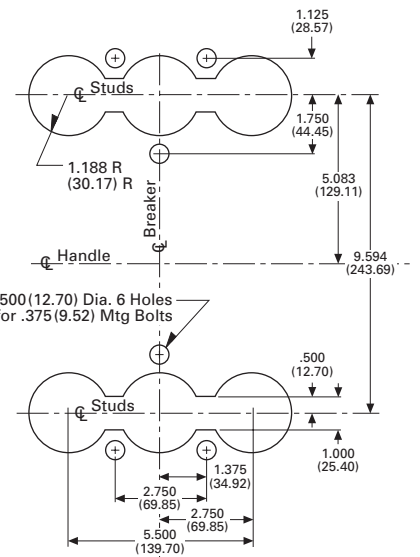
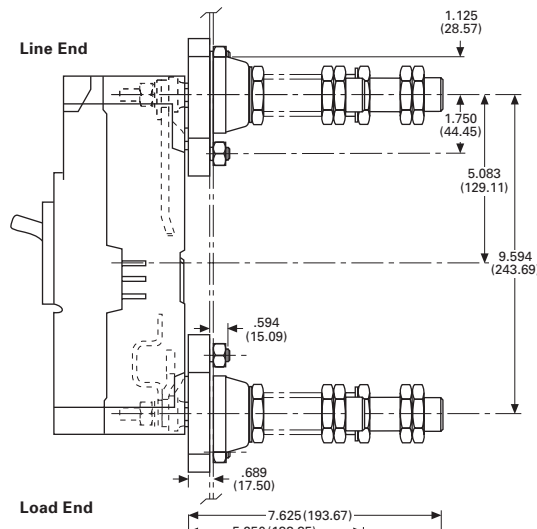
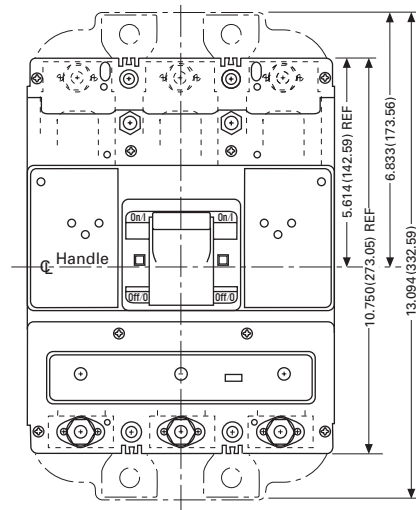
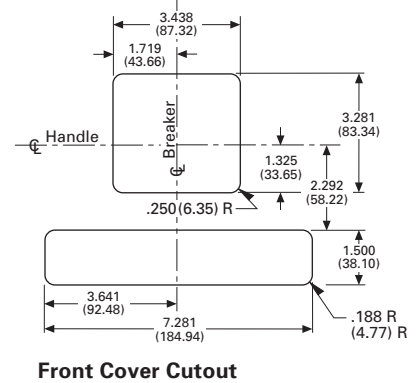
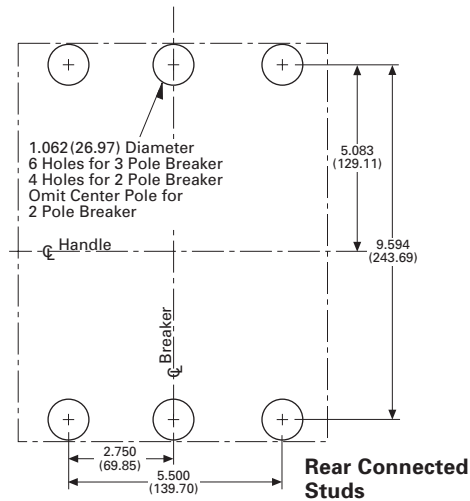
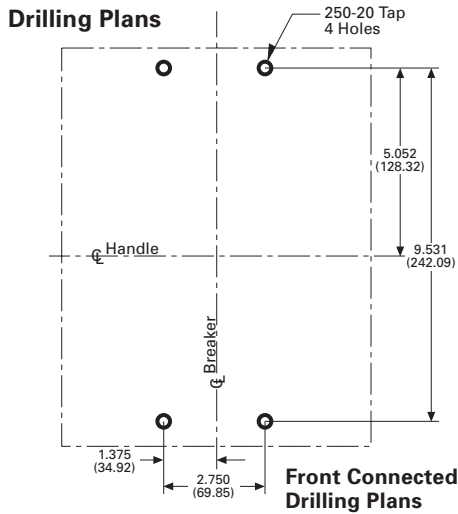
On	45 lbs.
Off	50 lbs.
Reset	60 lbs.

① Measurements taken approximately 3/16 in. from end of handle.



Series C HMCP Motor Circuit Protectors, 3-600 Amperes

**L-Frame
 Drilling Plans**



Reproduced from drawings 1493D63 and 1493D67

Dimensions in parentheses in millimeters

Cutler-Hammer
 Westinghouse & Cutler-Hammer Products
 Five Parkway Center
 Pittsburgh, Pennsylvania, U.S.A. 15220

